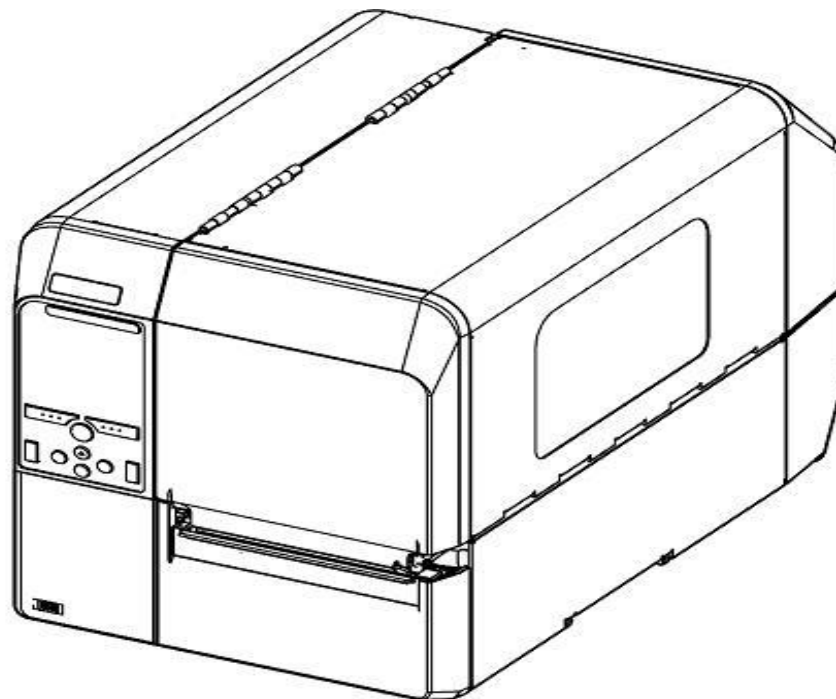




## CL6NX SERVICE PARTS LIST

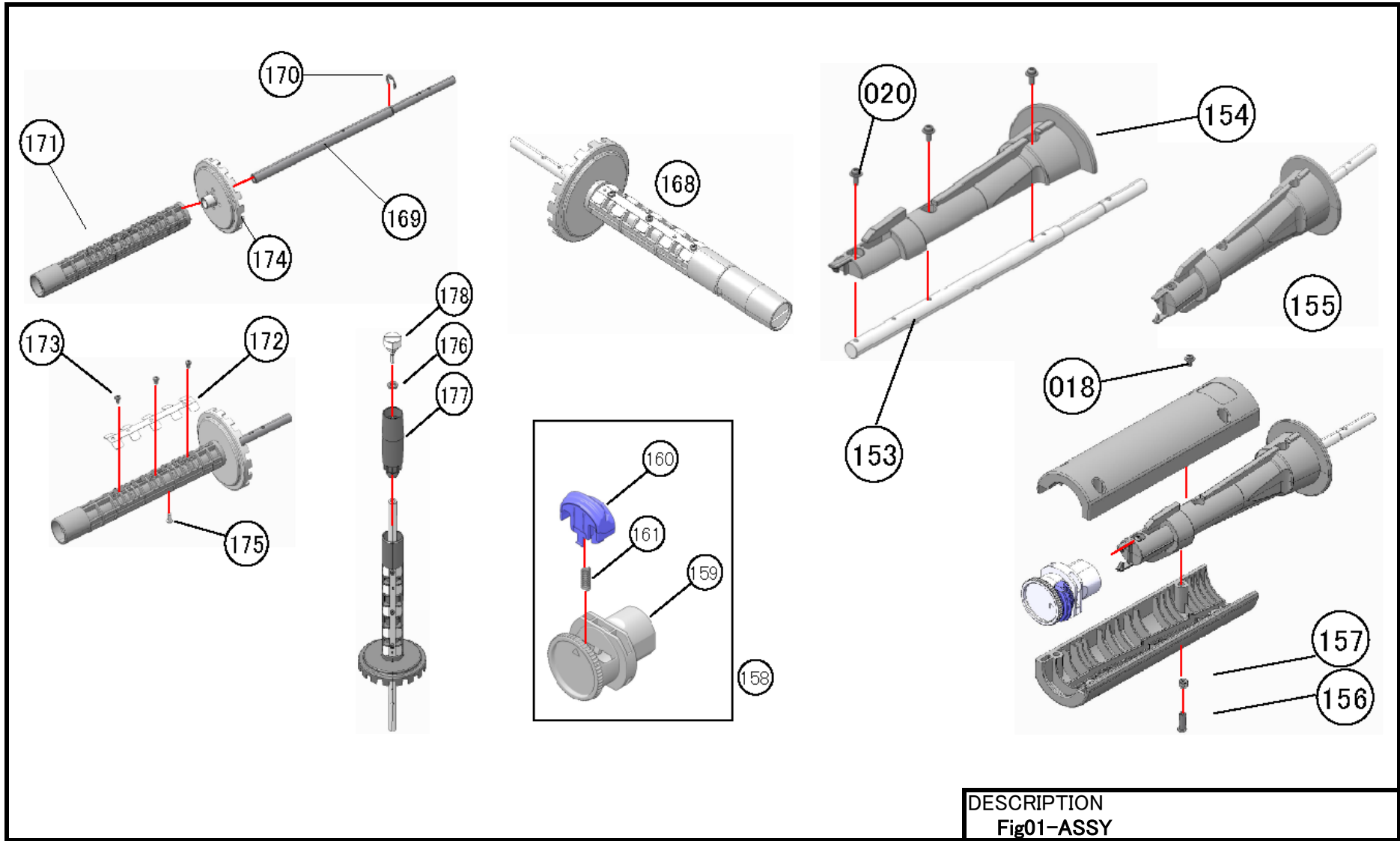


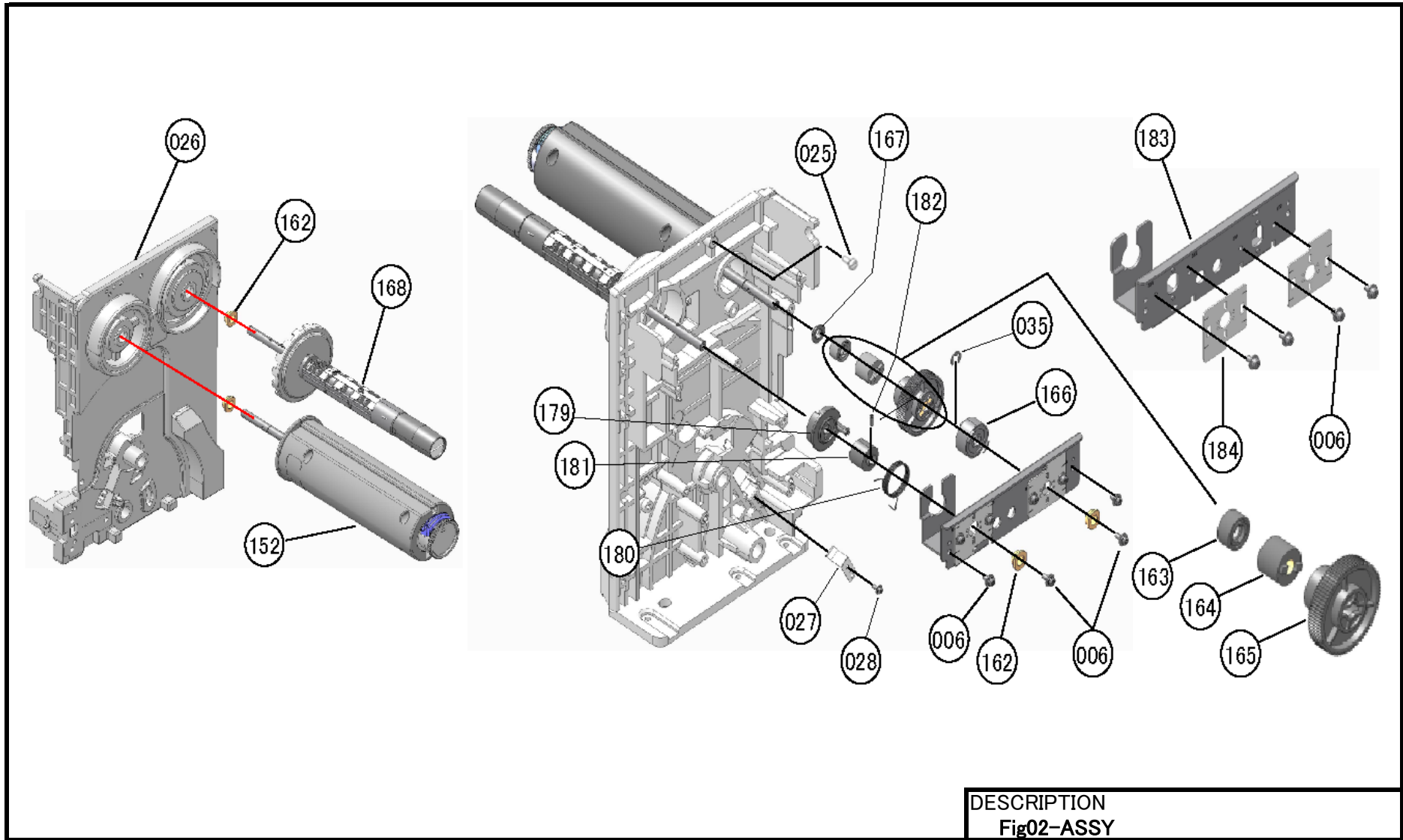
発行

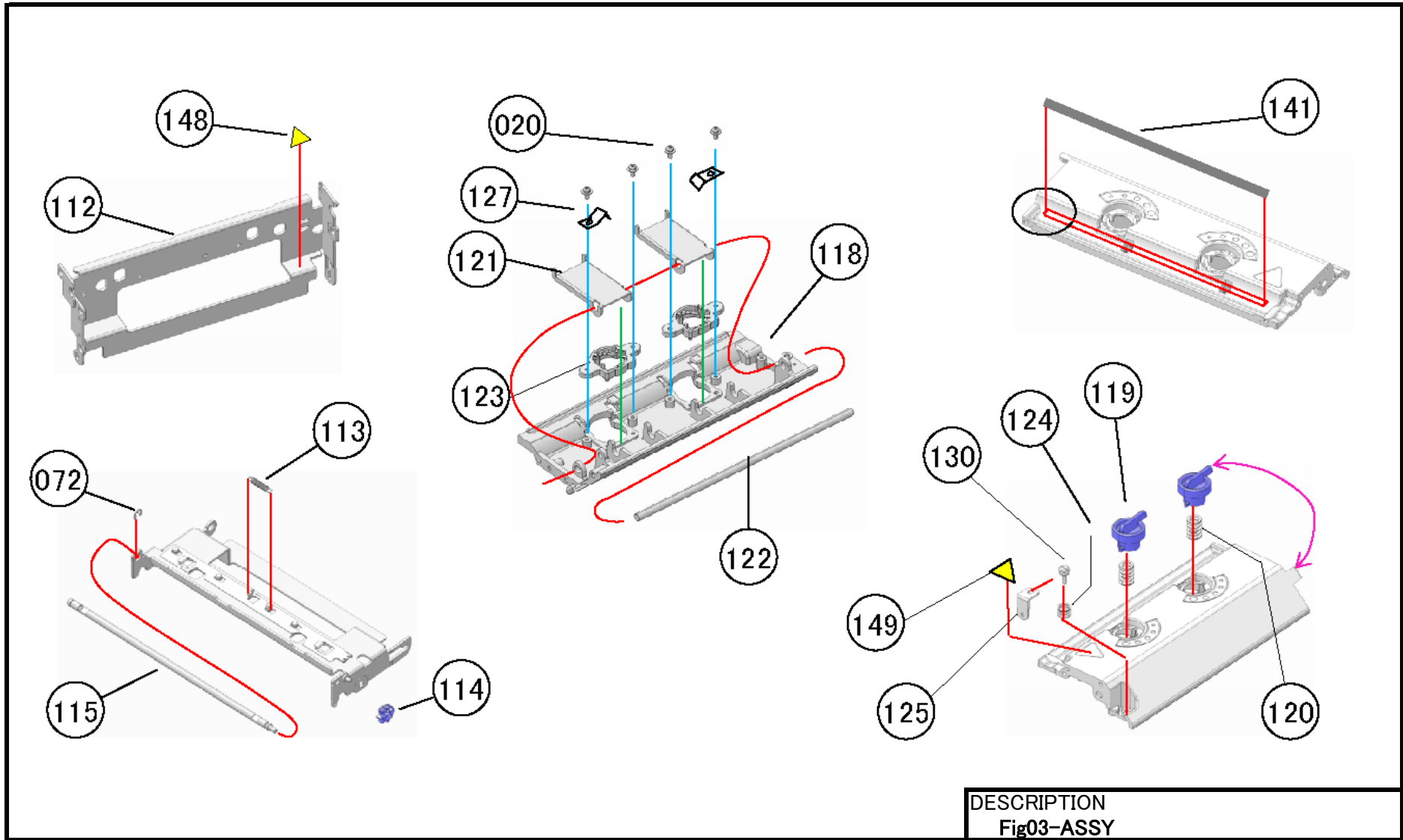
WWCL90000  
WWCL91000

RV01521

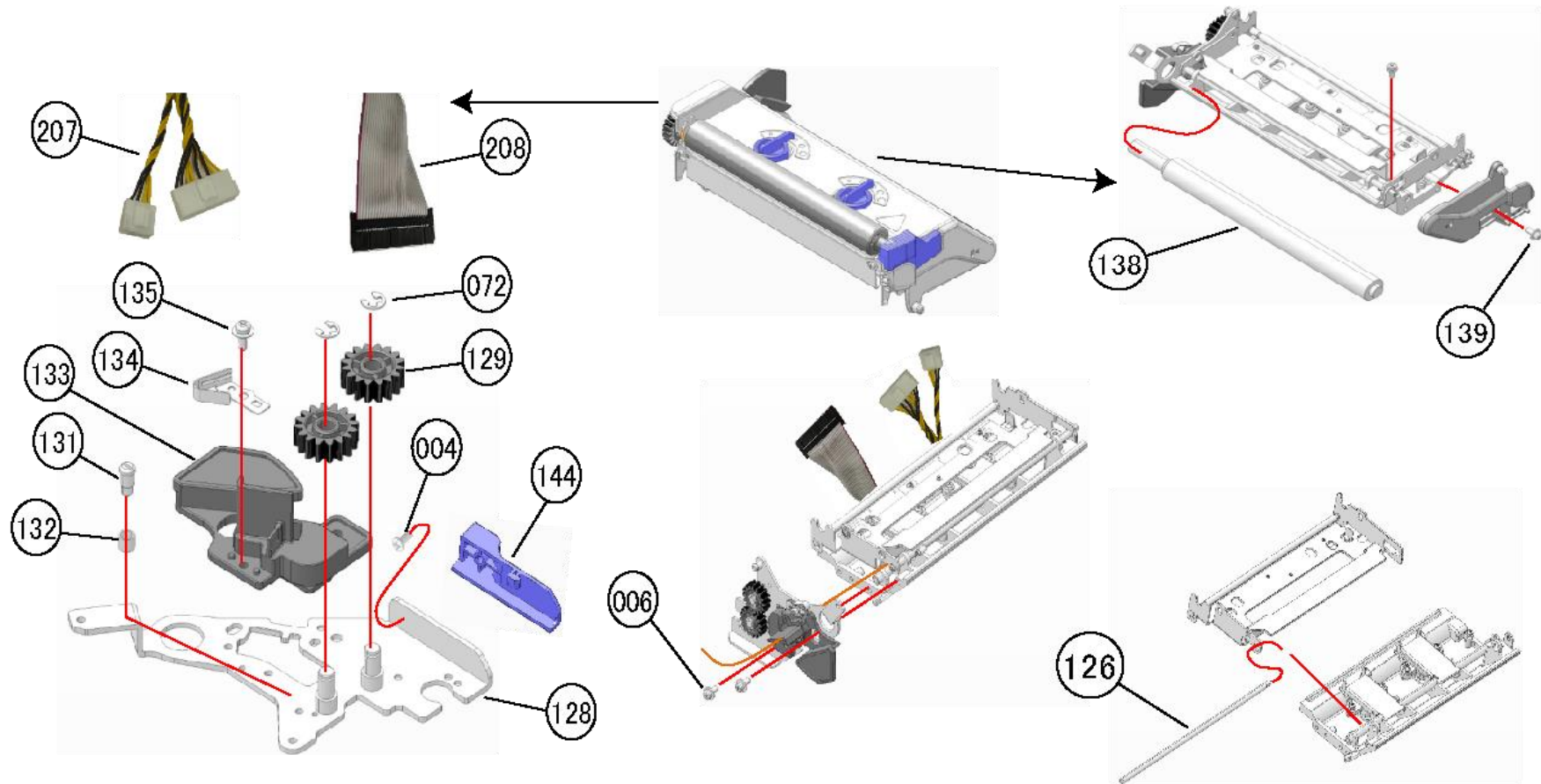
SATO CORPORATION . TOKYO. JAPAN



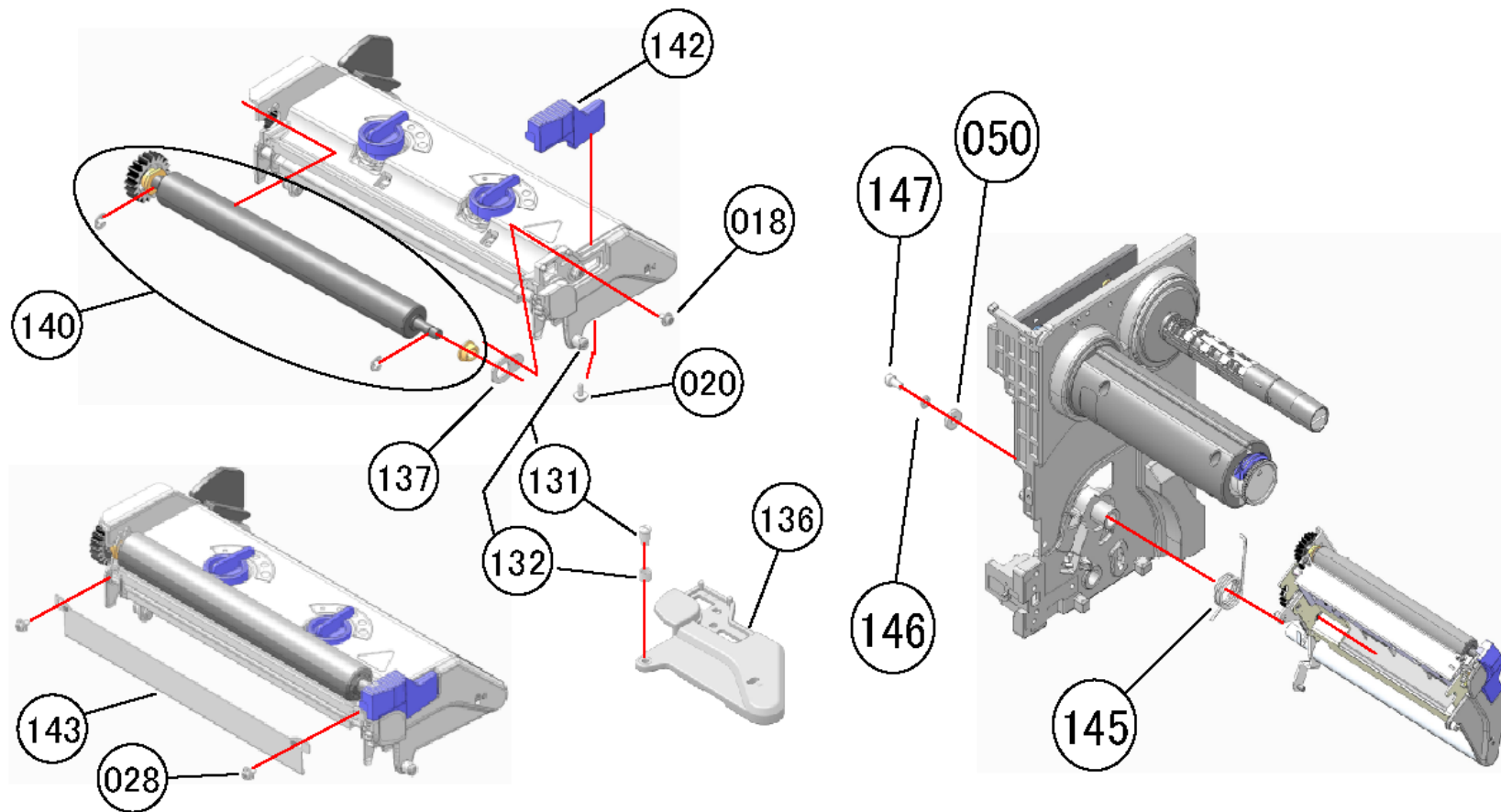




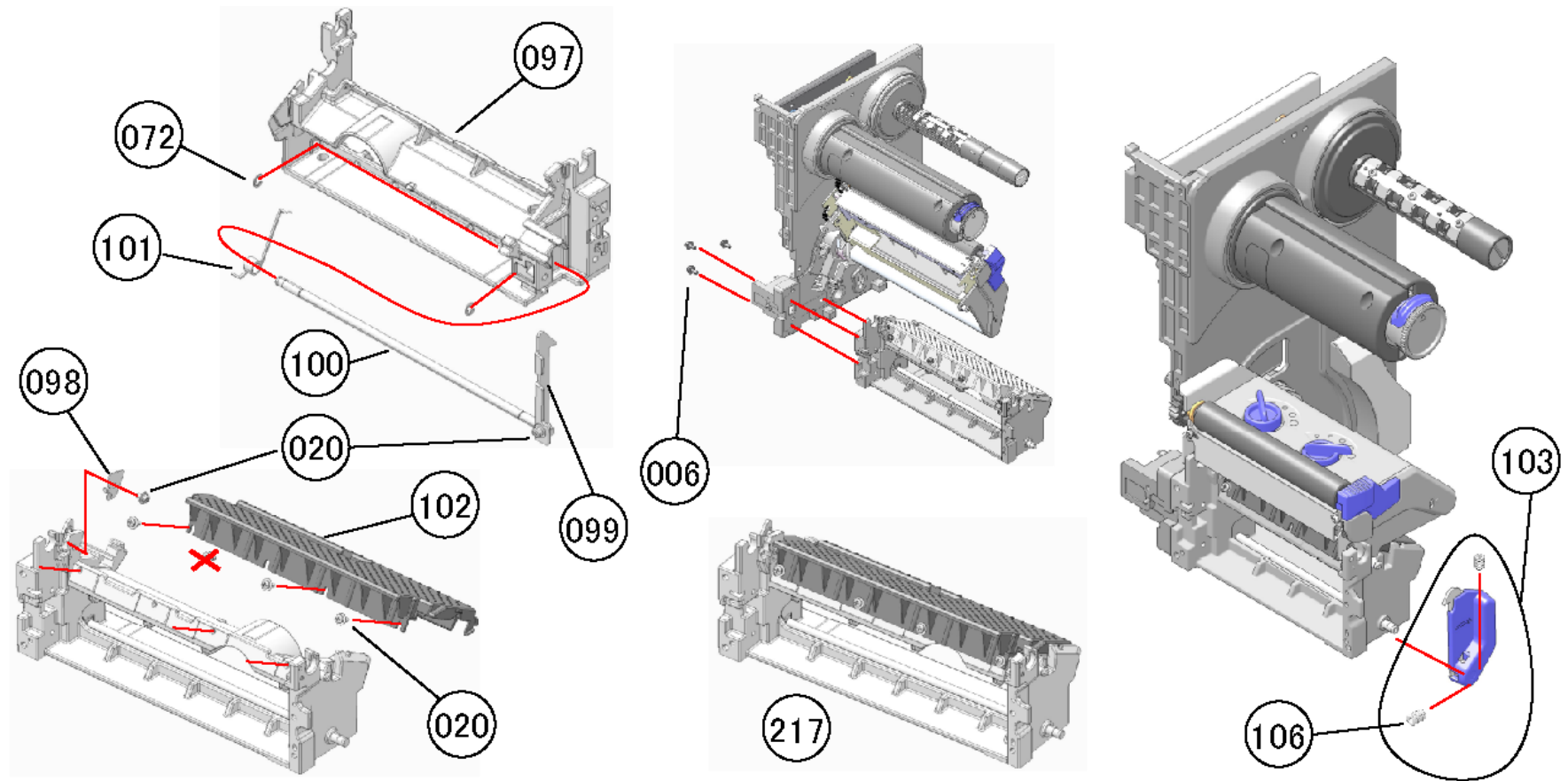
DESCRIPTION  
Fig03-ASSY



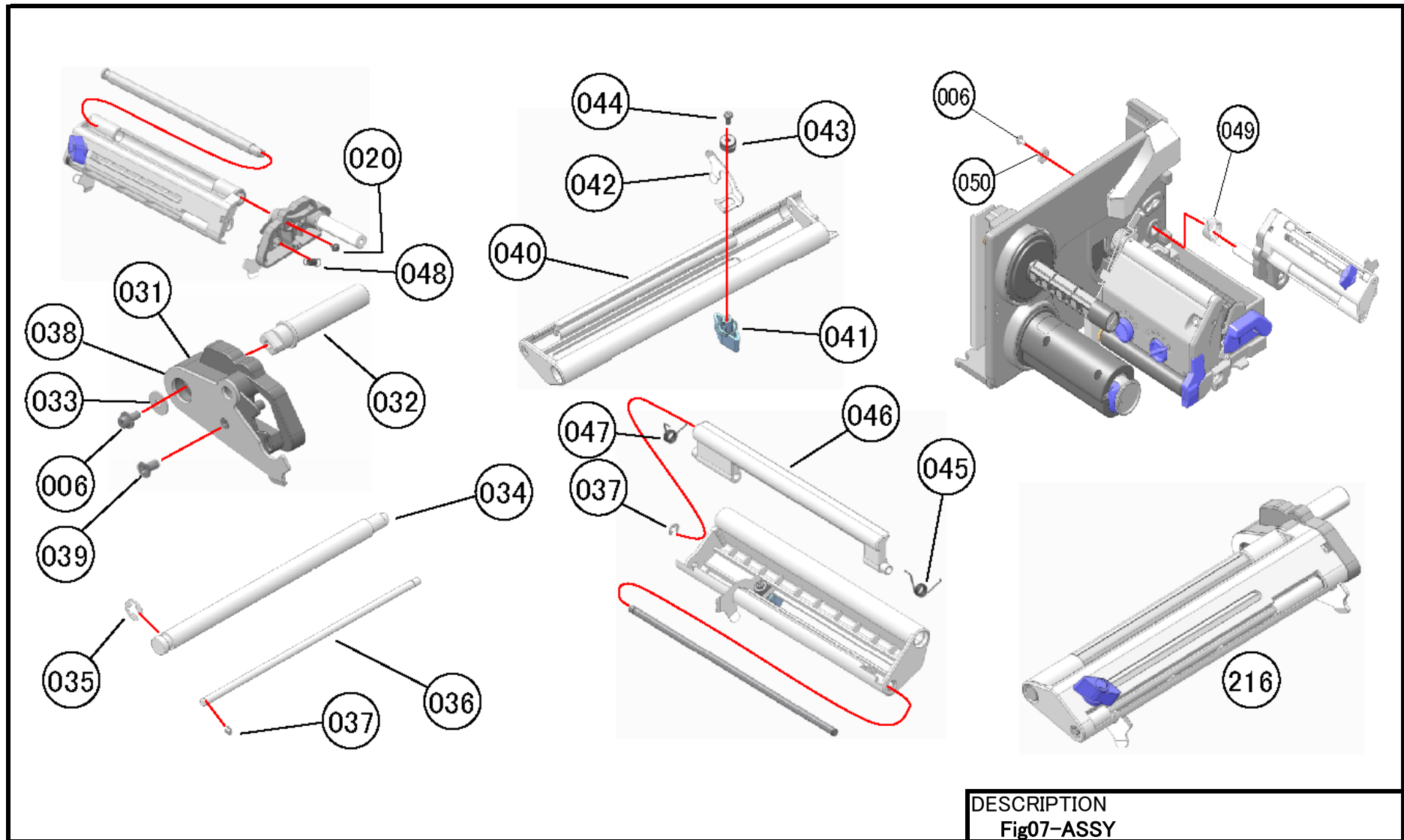
DESCRIPTION  
Fig04-ASSY



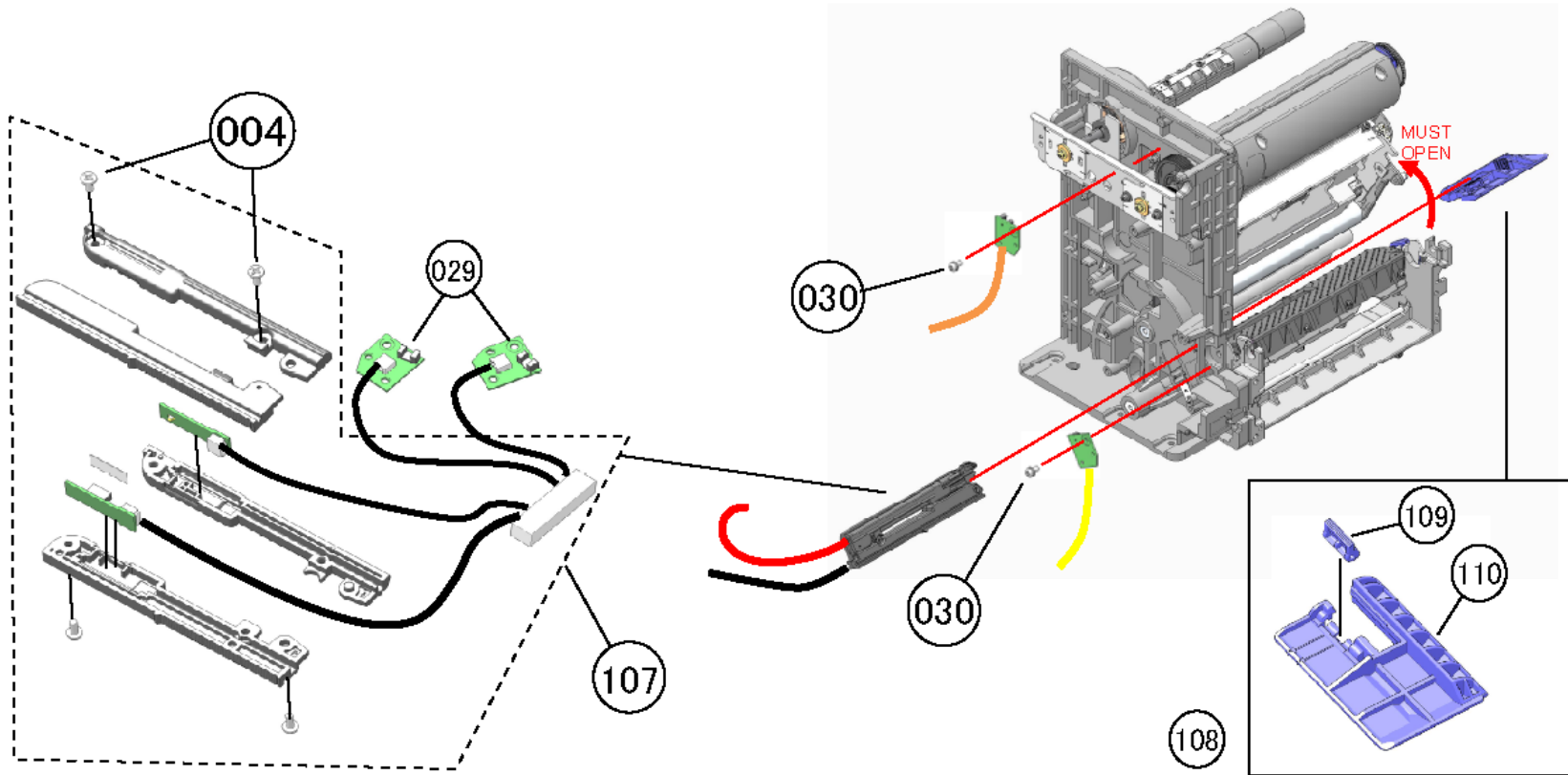
DESCRIPTION  
Fig05-ASSY



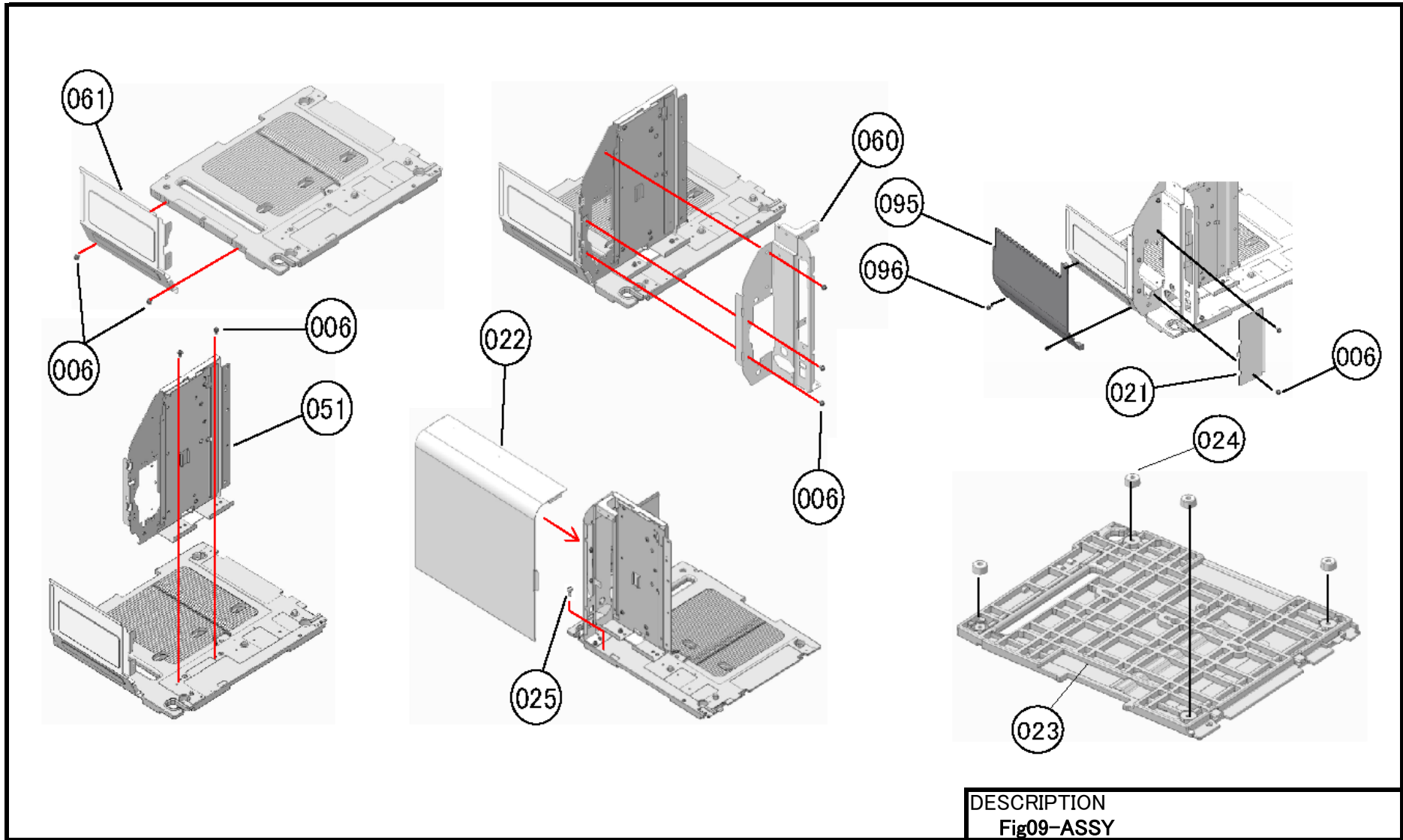
DESCRIPTION  
Fig06-ASSY

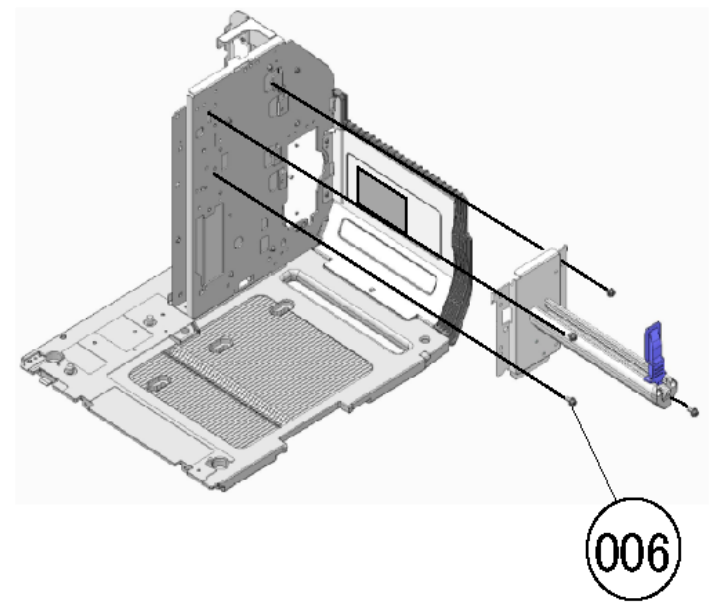
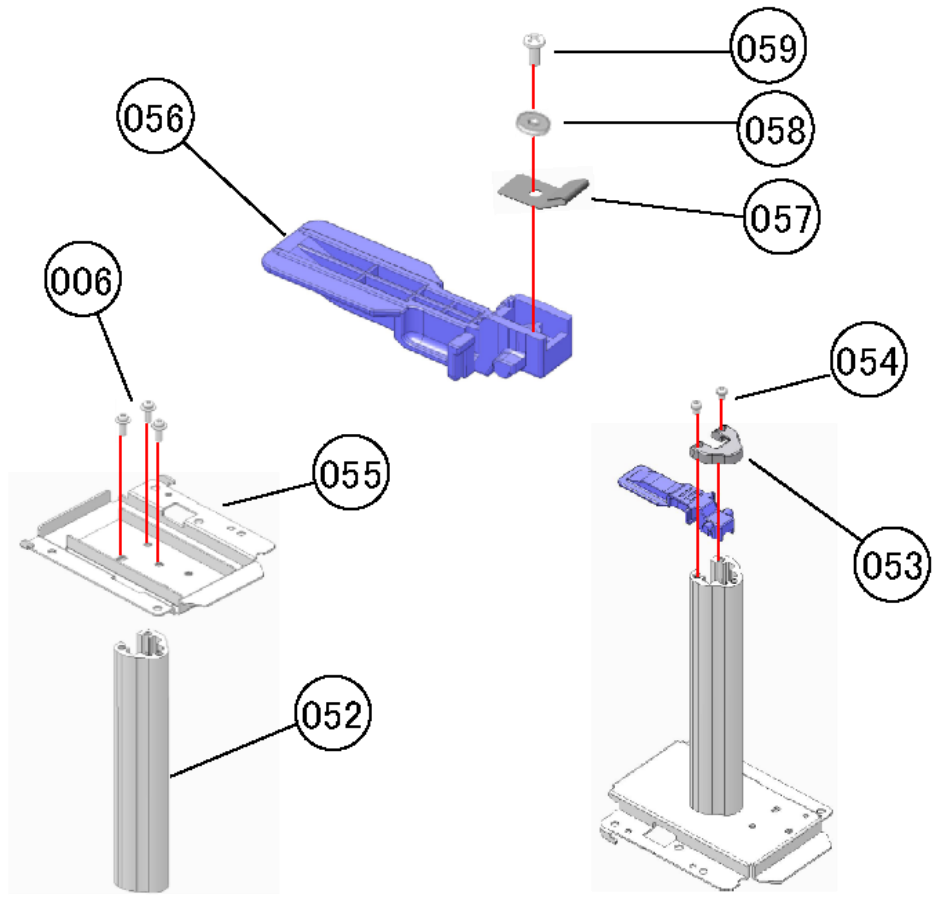




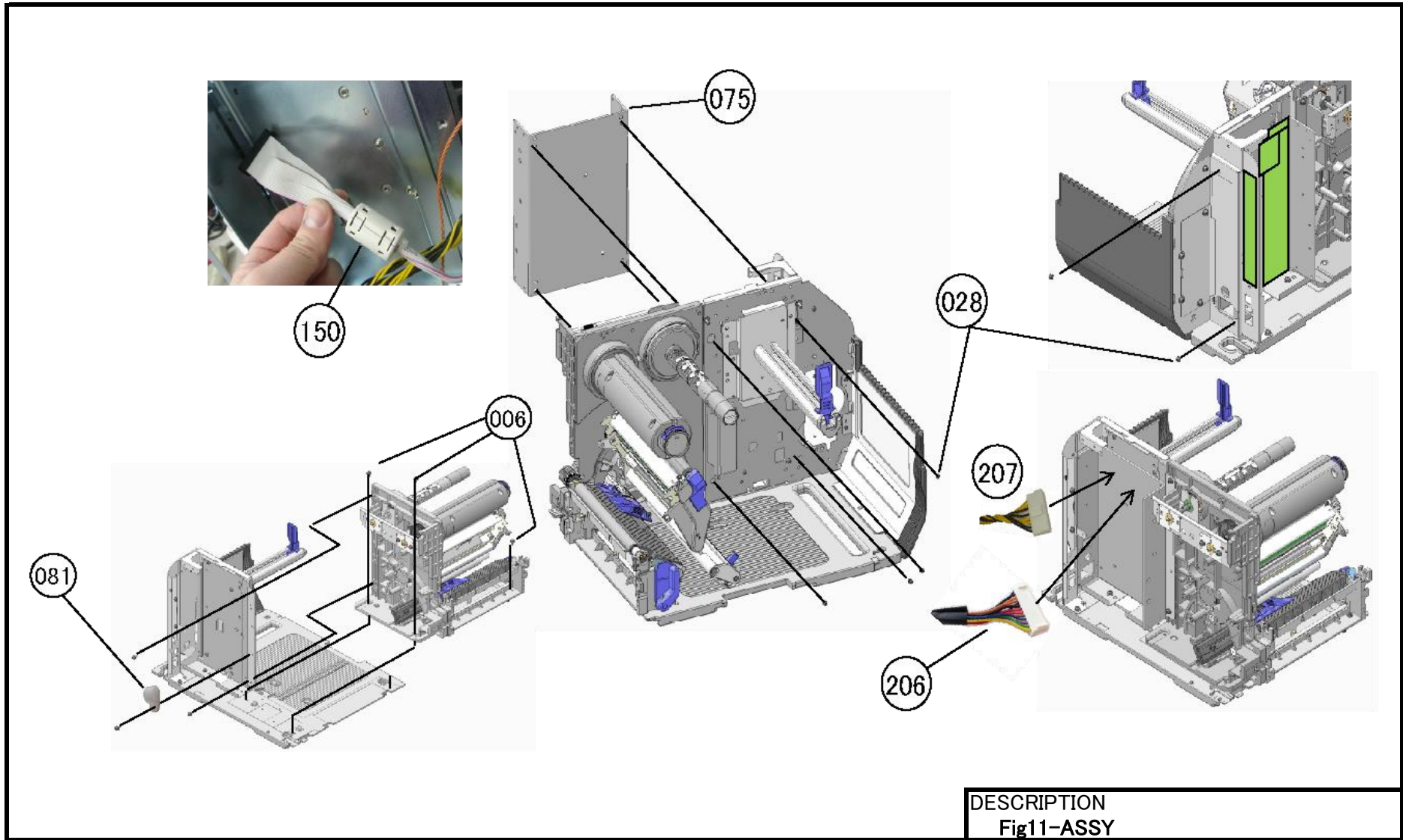


DESCRIPTION  
Fig08-ASSY

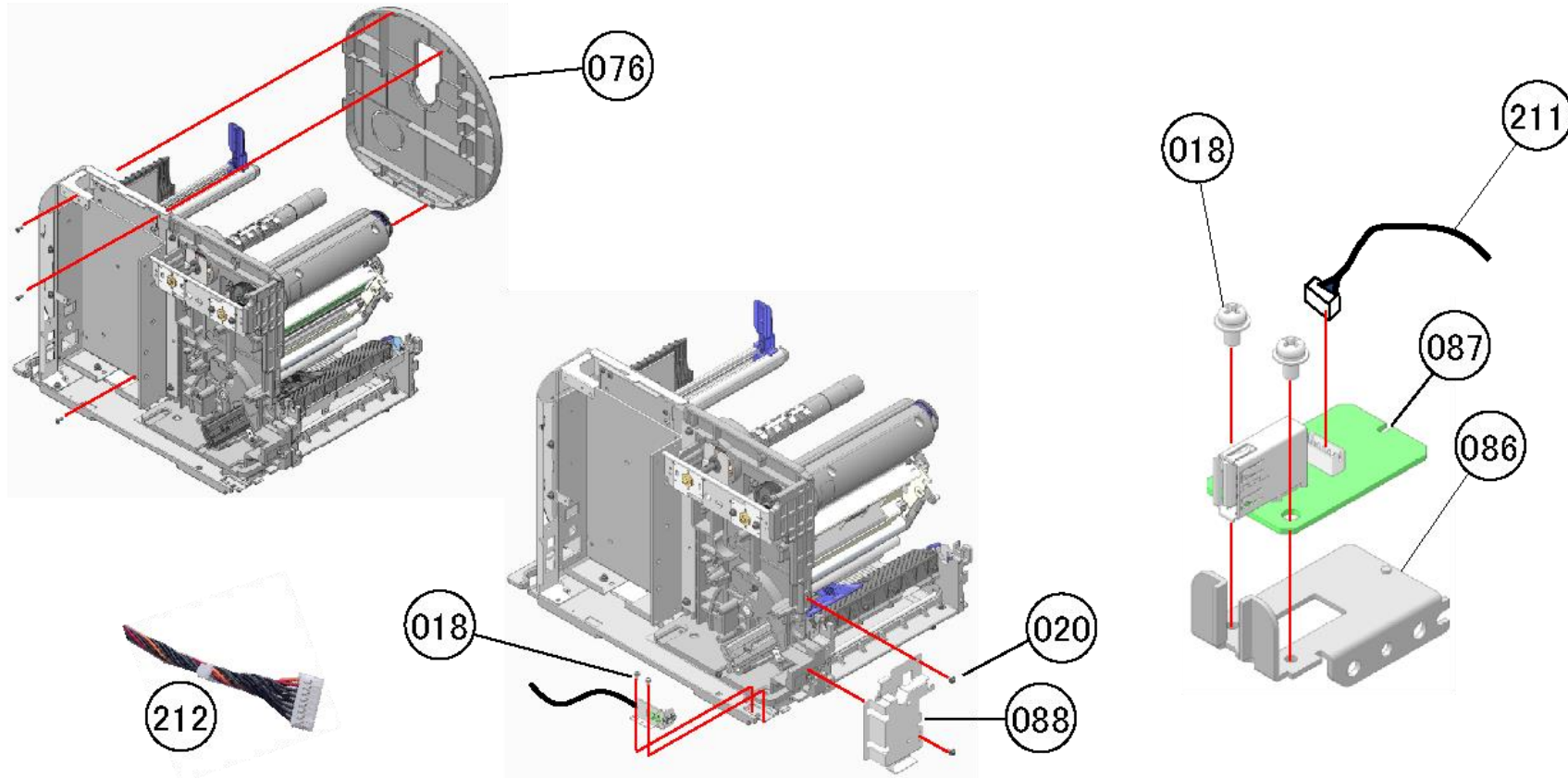




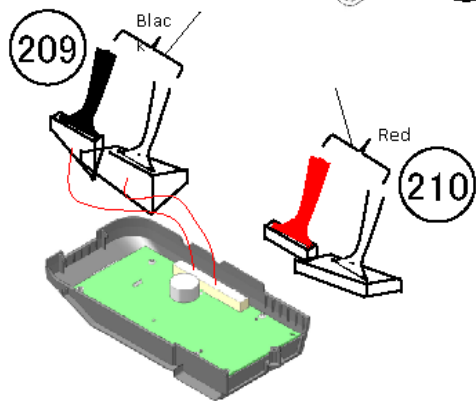
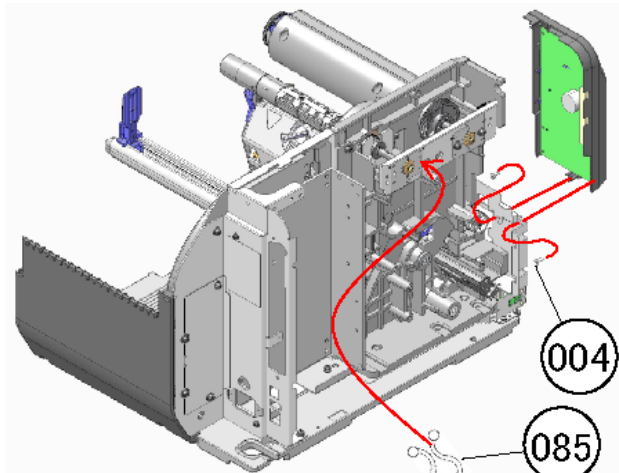
DESCRIPTION  
Fig10-ASSY



DESCRIPTION  
Fig11-ASSY

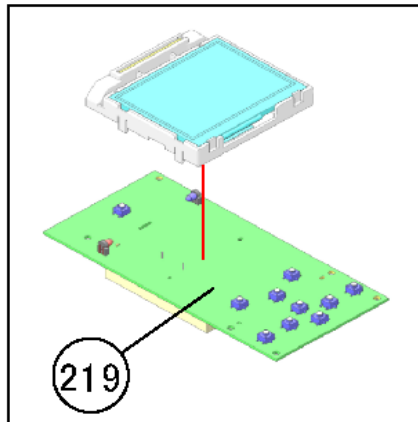


DESCRIPTION  
Fig12-ASSY

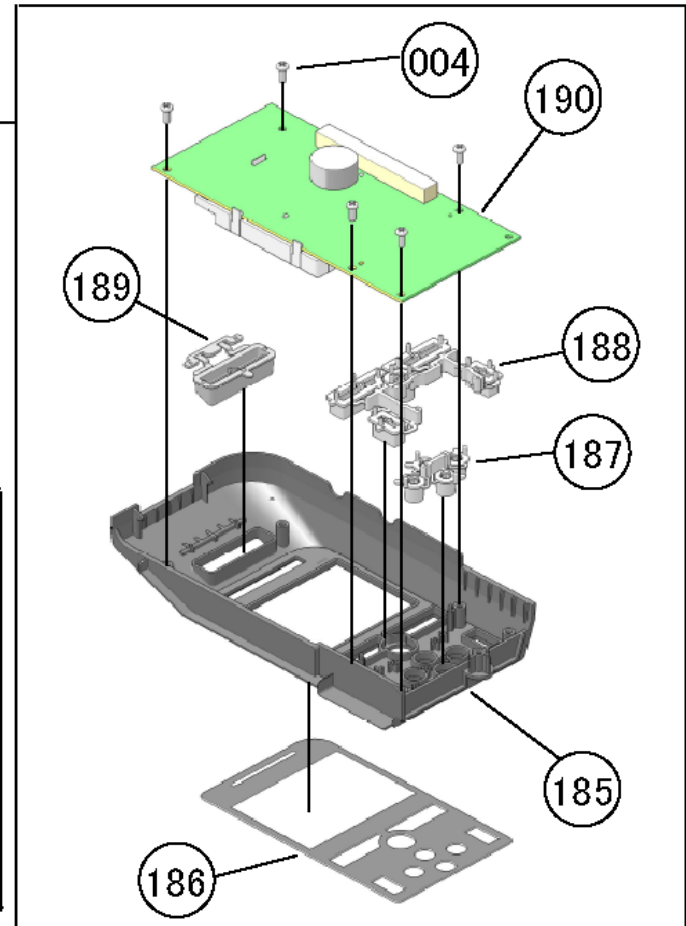


218

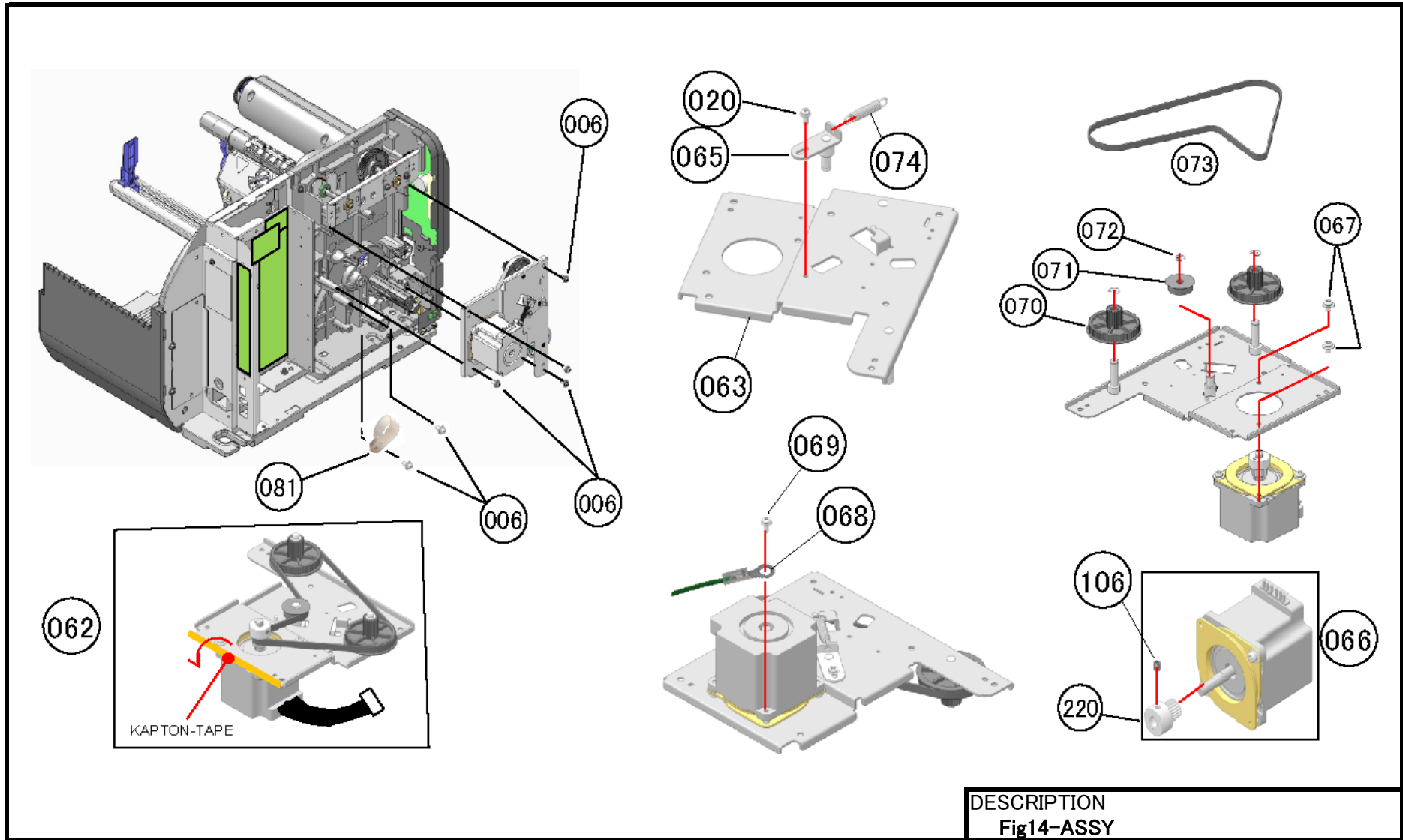
190

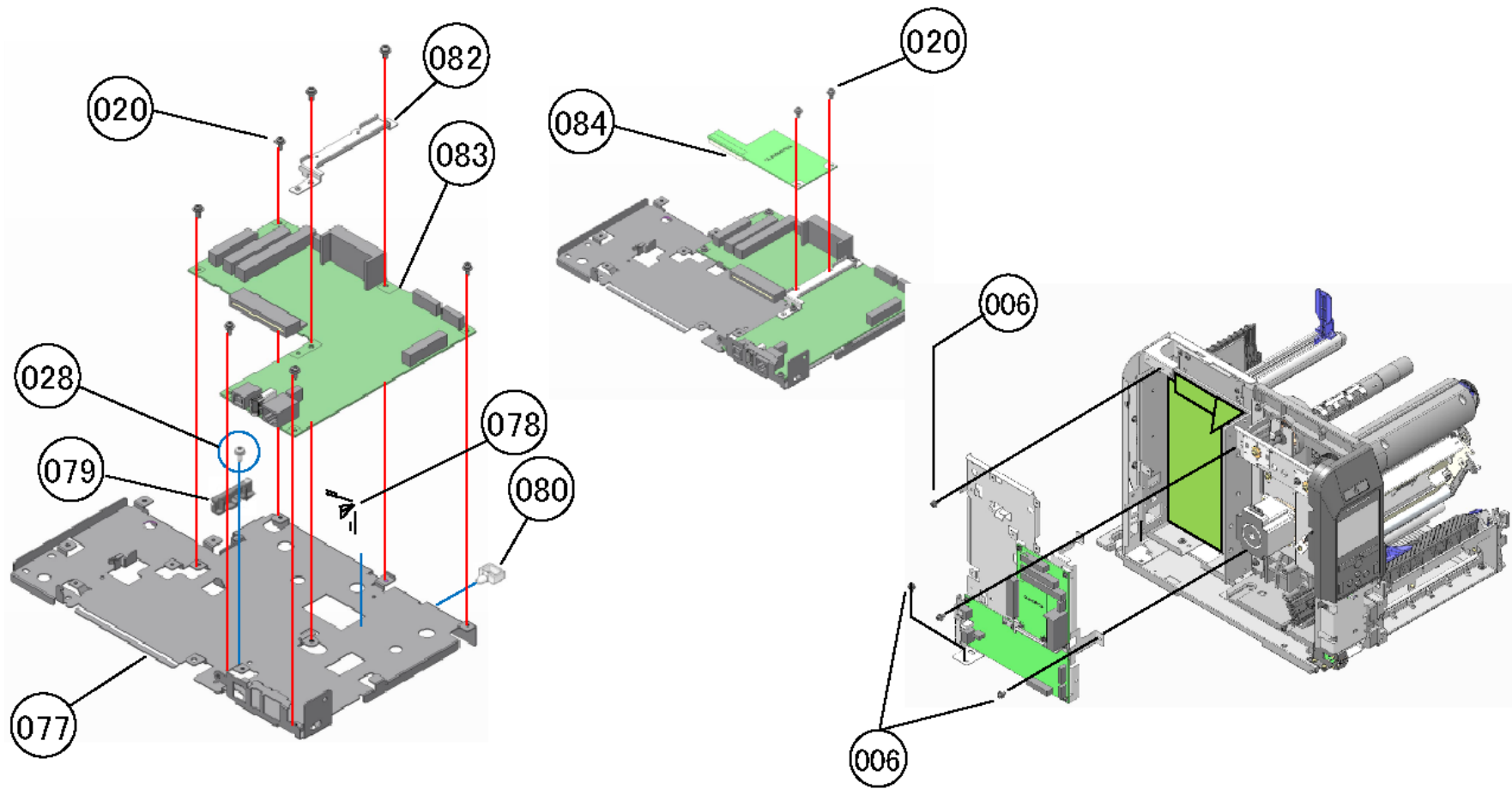


219



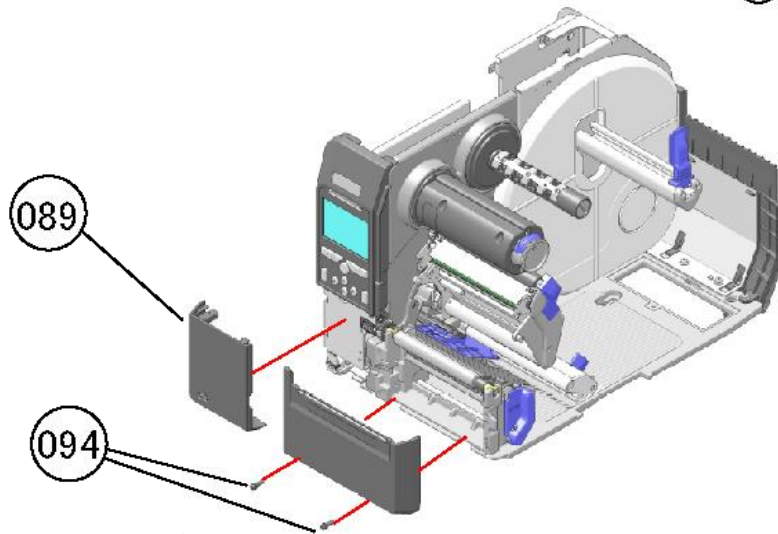
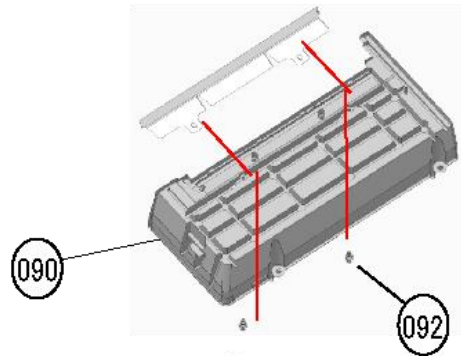
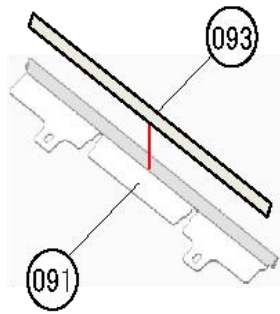
DESCRIPTION  
Fig13-ASSY



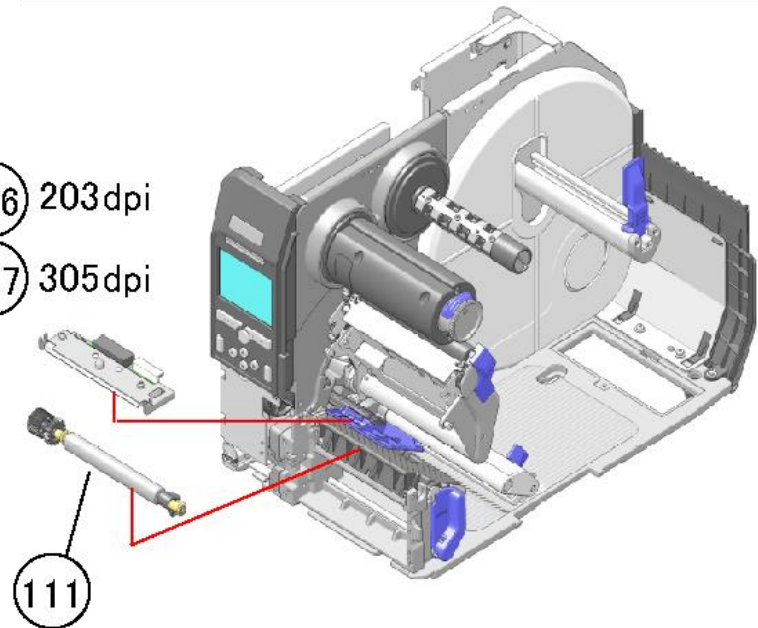


DESCRIPTION  
Fig15-ASSY

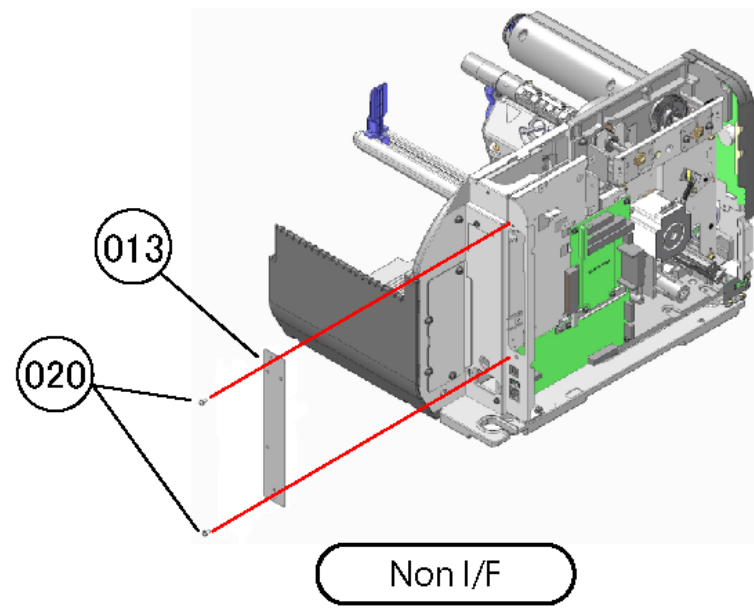
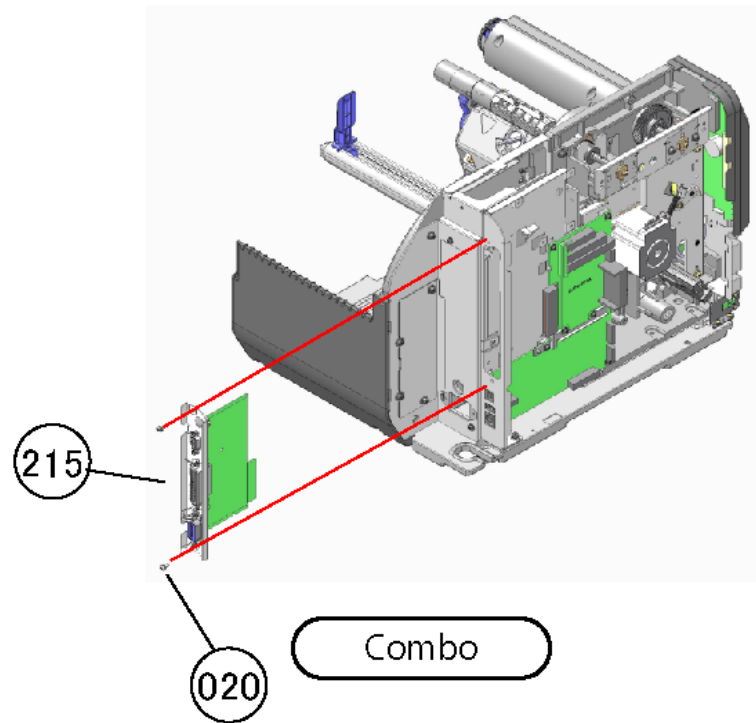




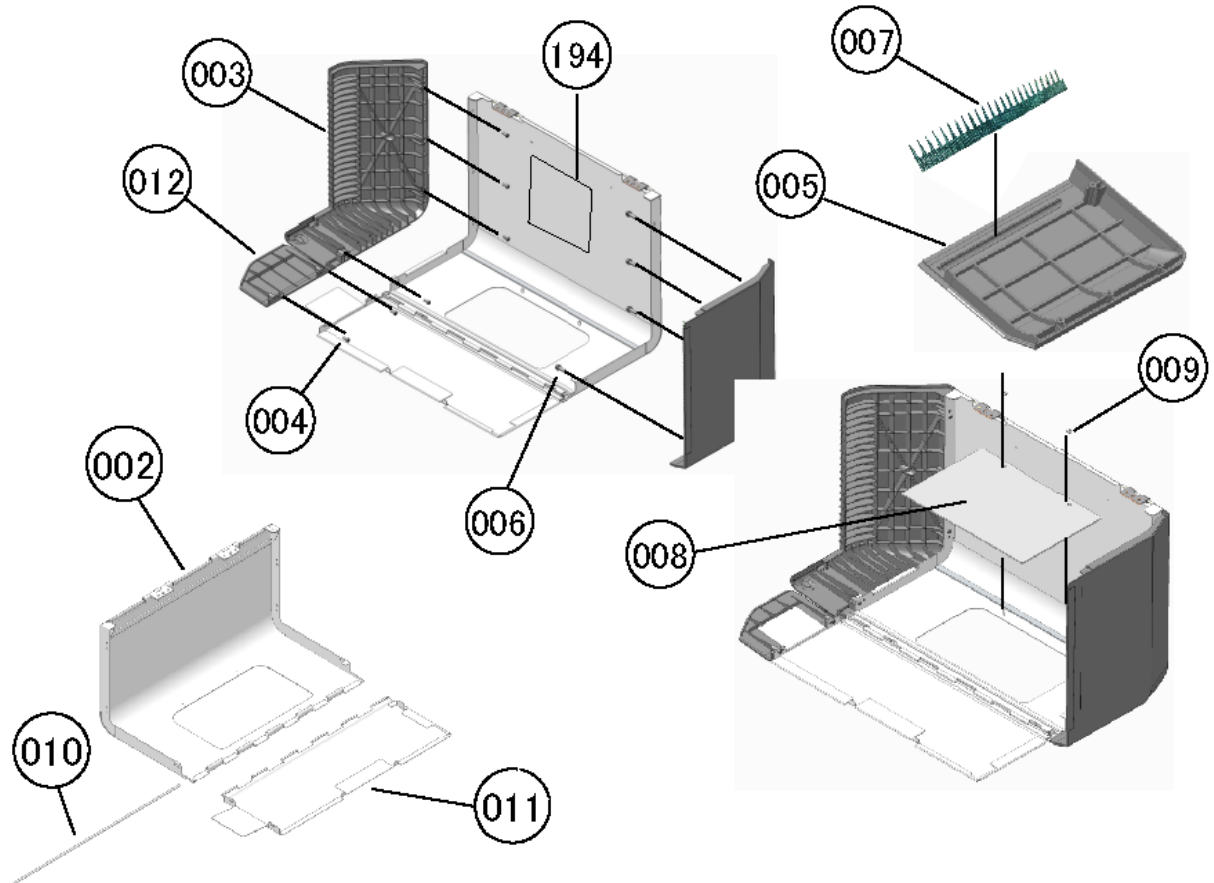
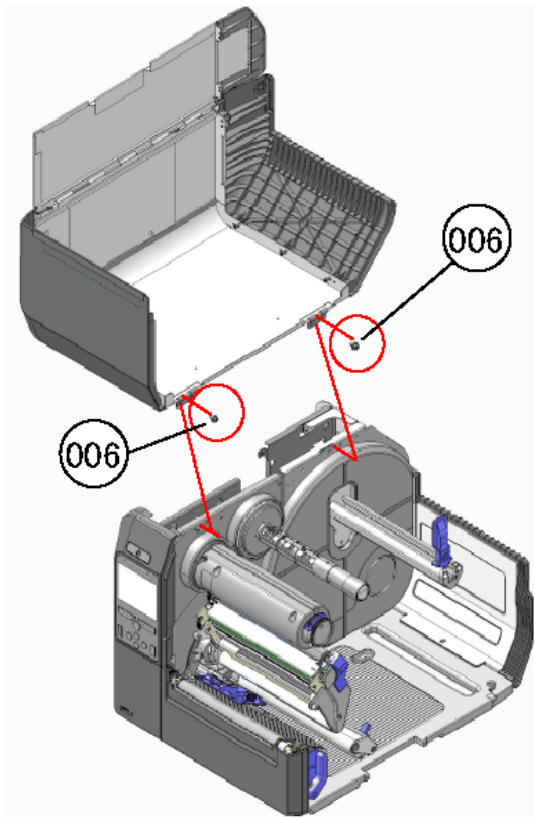
- 116 203dpi
- 117 305dpi



DESCRIPTION  
Fig16-ASSY

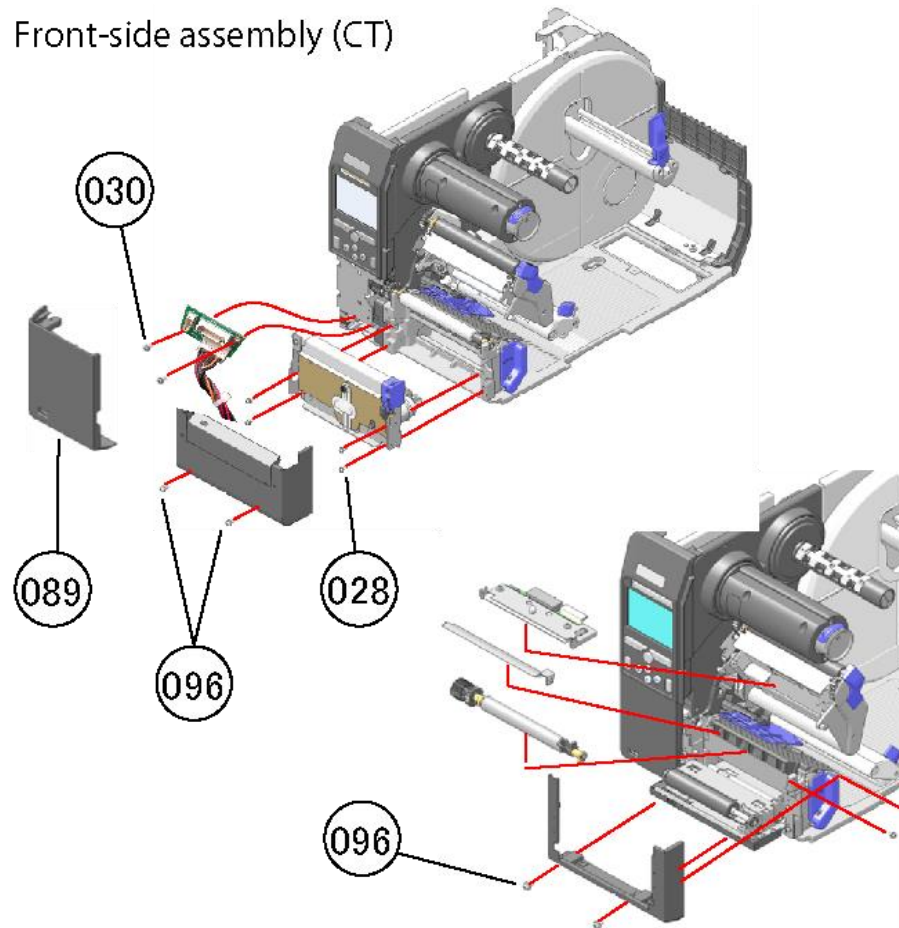


DESCRIPTION  
Fig17-ASSY

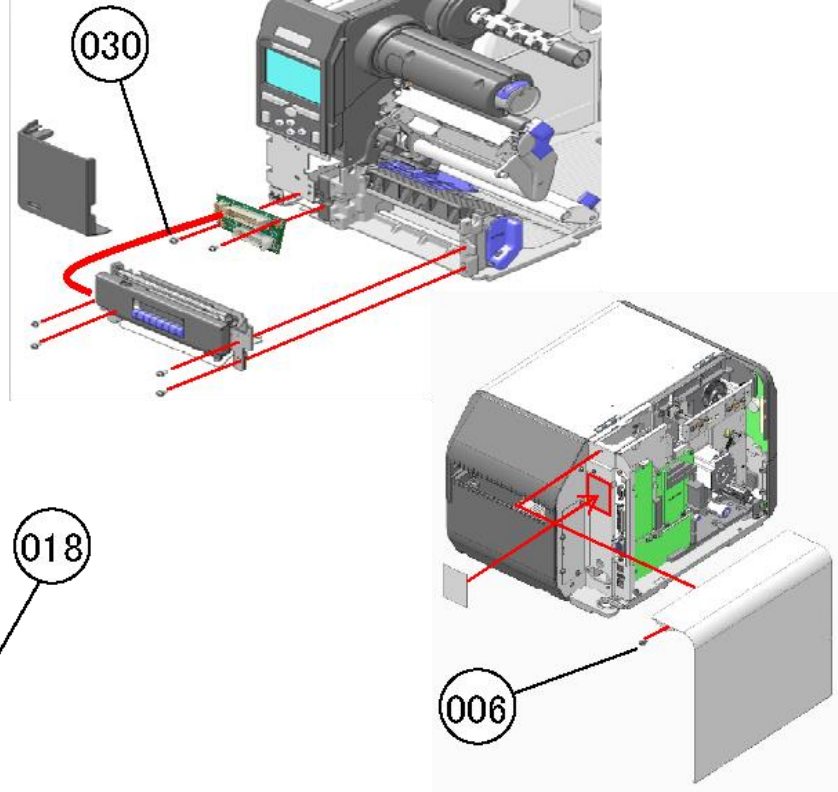


DESCRIPTION  
Fig18-ASSY

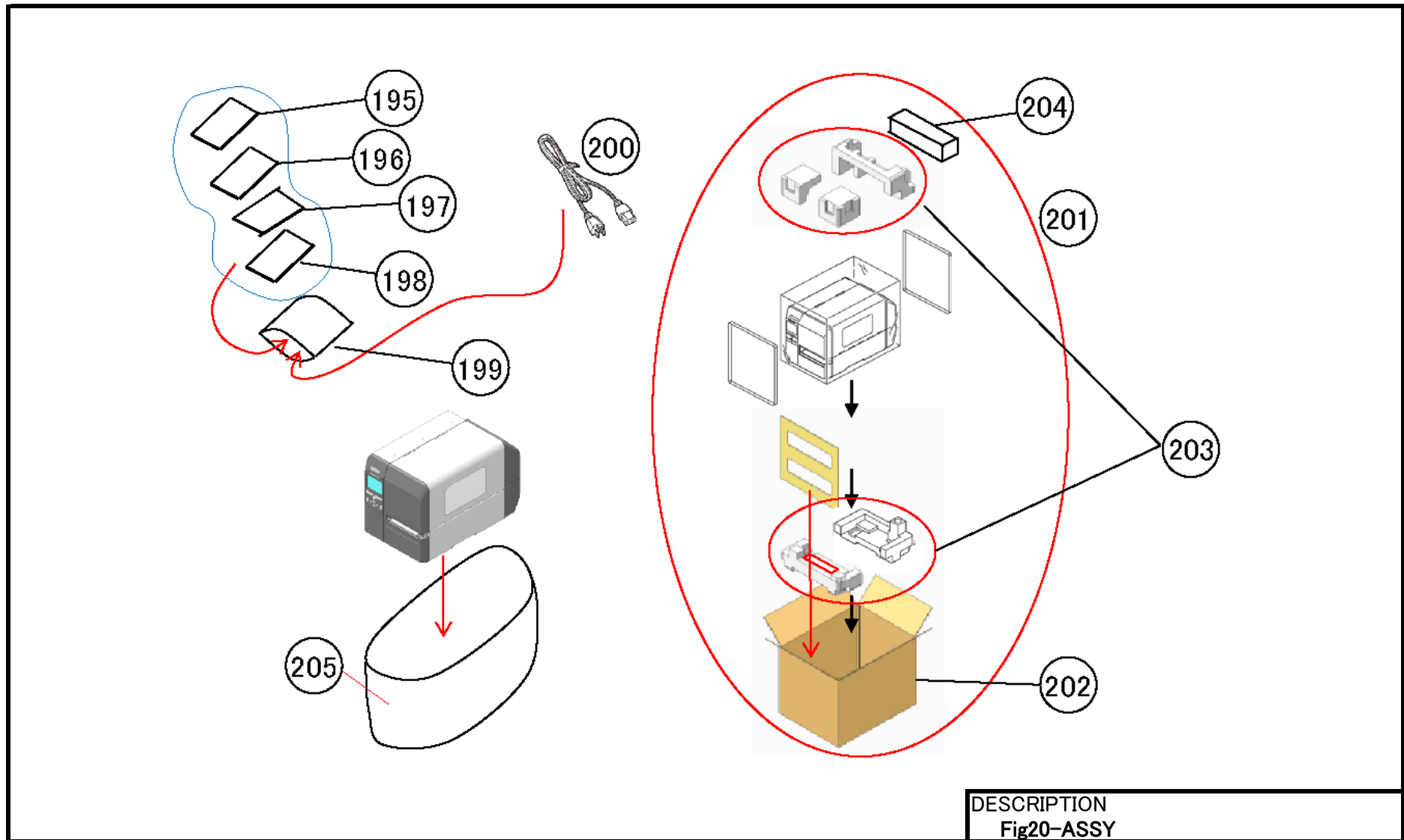
Front-side assembly (CT)



Front-side assembly (DS)



DESCRIPTION  
Fig19-ASSY



## CL6NX SERVICE PARTS LIST

DATE: 24 Mar,2015

No	First_Code	Description	Standard	NOTE	NOTE
2	R32163402	OPEN COVER TOP SET		Fig18	
3	P56208301	REAR OPEN COVER		Fig18	
4	M16208000	BIND HEAD P TIGHT SCREW	PTB3008NI	Fig4,8,13,18	
5	P56176601	FRONT COVER TOP		Fig18	
6	M16259000	PAN HEAD SCREW+SW+WL	2JP4010+SW+WL	Fig2,4,6,7,9,10,11,14,15,18,19	
7	P56231500	SHEET(THUNDER)W176		Fig18	
8	P53097000	WINDOW		Fig18	
9	MV8300030	PUSH NUT	SPN-3 SUS	Fig18	
10	P53599000	HINGE PIN(SUB COVER)		Fig18	
11	P53103000	SUB OPEN COVER		Fig18	
12	P53111000	SUB REAR OPEN COVER		Fig18	
13	P54785000	IF COVER (STD)		Fig17	
18	MD4300622	PAN HEAD SCREW+SW+WL	2JP3006+SW+WL	Fig1,5,12,19	
20	MD4300822	PAN HEAD SCREW+SW+WL	2JP3008+SW+WL	Fig1,3,5,6,7,12,14,15,17	
21	P56208401	DIS BLIND COVER(RW)		Fig9	
22	R27582000	COVER LH SET		Fig9	
23	P56176802	BASE FRAME		Fig9	
24	P11522000	CASE LEG	FF-004-AR79	Fig9	
25	P53598000	PIN(COVER LH)		Fig2,9	
26	P52952000	CENTER FRAME		Fig2	
27	P53139000	SENSOR CASE TENSION		Fig2	

## CL6NX SERVICE PARTS LIST

DATE: 24 Mar,2015

No	First_Code	Description	Standard	NOTE	NOTE
28	MD3300822	PAN HEAD SCREW+SW+WS	2JP3008+SW+WS	Fig2,11,15,19	
29	R28363000	CL4NX HO RB PCB SET -LF		Fig8	Fig/Recommended Spare parts
30	MD3300621	PAN HEAD SCREW+SW+WS	2JP3006+SW+WS	Fig8,19	
31	P52970000	DAMPER BASE		Fig7	
32	P53638000	SHAFT(DAMPER BASE)		Fig7	
33	PA0730300	WASHER (4.2*14*1)		Fig7	
34	P56208500	SHAFT(DAMPER A)		Fig7	
35	ND0060030	E SNAP RING	E-6SU	Fig2,7	
36	P56208600	SHAFT(DAMPER B)		Fig7	
37	ND0030030	E SNAP RING	E-3SU	Fig7	
38	P56208700	LABEL GUIDE LH(DAMPER)		Fig7	
39	MA1300622	FLAT HEAD SCREW	2JD3006	Fig7	
40	P56208800	DAMPER HOLDER TOP		Fig7	
41	P53121000	LABEL GUIDE LEVER		Fig7	
42	P53127000	LABEL GUIDE RH		Fig7	
43	P53123000	LABEL GUIDE STOPPER		Fig7	
44	MH0301021	PAN HEAD P TIGHT SCREW	PTP3010NI	Fig7	
45	P56208901	SPRING(DAMPER B RH)		Fig7	
46	P56209000	DAMPER HOLDER UNDER		Fig7	
47	P56209101	SPRING(DAMPER B LH)		Fig7	
48	P56209201	SPRING(DAMPER A)		Fig7	

## CL6NX SERVICE PARTS LIST

DATE: 24 Mar,2015

No	First_Code	Description	Standard	NOTE	NOTE
49	P53637000	SPRING(DAMPER BASE)		Fig7	
50	PA0720100	COLLAR(5*16*2.3)		Fig5,7	
51	R32356301	CENTER PLATE SET		Fig9	
52	P56209400	LABEL HOLDER		Fig10	
53	P53125000	LABEL HOLDER CAP		Fig10	
54	MA0400822	PAN HEAD SCREW	2JP4008	Fig10	
55	R30543001	LABEL HOLDER SUPPORT SET		Fig10	
56	P53122000	LABEL HOLDER GUIDE RH		Fig10	
57	P56483100	LABEL HOLDER GUIDE RH SP		Fig10	
58	NA1003022	PLAIN WASHER		Fig10	
59	MH0300821	PAN HEAD P TIGHT SCREW	PTP3008NI	Fig10	
60	R32285303	REAR PANEL LH(SILK)		Fig9	
61	P56225001	REAR PANEL RH		Fig9	
62	R29788000	GEAR BRACKET ASSY		Fig14	
63	R27637000	GEAR FRAME SET		Fig14	
65	R27442000	TENSION BR SET		Fig14	
66	R29789000	MOTOR S/A		Fig14	
67	MD4400822	PAN HEAD SCREW+SW+WL	2JP4008+SW+WL	Fig14	
68	R13541000	FG CABLE-195 SET-LF		Fig14	
69	MD0400622	PAN HEAD SCREW-LF	2J4006+SW	Fig14	
70	P52963000	GEAR/PULLEY(0_6*20/67)		Fig14	



## CL6NX SERVICE PARTS LIST

DATE: 24 Mar,2015

No	First_Code	Description	Standard	NOTE	NOTE
71	P44208000	TENSION ROLLER		Fig14	
72	ND0040022	E SNAP RING	E-4SU	Fig3,4,6,14	
73	P53988000	TIMING BELT	60S2M490	Fig14	Fig/Recommended Spare parts
74	P53618000	SPRING(IDOLE)		Fig14	
75	K00517900	POWER UNIT-LF	370N201(500-3703+S14)	Fig11	Fig/Recommended Spare parts
76	P53128000	LABEL HOLDER GUIDE LH		Fig12	
77	P52979000	MAIN PCB BR		Fig15	
78	P55724000	HEAT CONDUCTION PAD	TMS-14-50-15*15HC	Fig15	
79	P52981000	I/F GUIDE RAIL		Fig15	
80	P54964000	CABLE SADDLE	GRBWS-0911E-VO	Fig15	
81	JG100141A	NYLON CLAMP	NK-14N	Fig14	
82	P56209703	MAIN PCB SUB BR		Fig15	
83	R32241601	CLNX-CONT PCB ASSY-LF		Fig15	Fig/Recommended Spare parts
84	R32262401	CLNX-FPGA PCB ASSY-LF		Fig15	Fig/Recommended Spare parts
85	P55073000	OMEGA LOCK	OLS-150BK	Fig13	
86	P53115000	USB PCB BR		Fig12	
87	R28364000	CL4NX USB PCB ASSY		Fig12	
88	P53114000	CONT PCB BR		Fig12	
89	P53096000	FRONT COVER UNDER LH		Fig16,19	
90	P56176700	FRONT COVER UNDER RH		Fig16	
91	P56217001	TEAR OFF CUTTER		Fig16	

## CL6NX SERVICE PARTS LIST

DATE: 24 Mar,2015

No	First_Code	Description	Standard	NOTE	NOTE
92	MD4300522	PAN HEAD SCREW+SW+WL	2JP3005+SW+WL	Fig16	
93	P56209800	SHEET(TEAR OFF)		Fig16	
94	MD3401428	PAN HEAD SCREW+SW+WS	8JP4014+SW+WS	Fig16	
95	P56209901	REAR COVER		Fig9	
96	MD3401028	PAN HEAD SCREW+SW+WS	8JP4010+SW+WS	Fig9,19	
97	P56176902	ENGINE FRAME		Fig6	
98	P52973000	LABEL GUIDE LH(F)		Fig6	
99	P52954000	HEAD LOCK PLATE LH		Fig6	
100	P56210000	SHAFT(HOOK)		Fig6	
101	P53616000	SPRING(HOOK)		Fig6	
102	P56210100	MEDIA GUARD		Fig6	
103	R30541000	HEAD LOCK ASSY		Fig6	
106	MJ1400524	HEX SOCKET SET SCREW(W-POINT)	H2J4005	Fig6,14	
107	R32164000	SENSOR S/A-LF		Fig8	Fig/Recommended Spare parts
108	R32444500	LABEL SENSOR ASSY		Fig8	
109	P53012000	SENSOR GUIDE LEVER		Fig8	
110	P56226100	LABEL SENSOR GUIDE		Fig8	
111	R32174100	PLATEN S/A(B)		Fig16	Fig/Recommended Spare parts
112	R32165404	HEAD BASE PLATE SET		Fig3	
113	P56310900	SPRING(RELEASE)		Fig3	
114	P52999000	HEAD_AJ_KNOB		Fig3	

## CL6NX SERVICE PARTS LIST

DATE: 24 Mar,2015

No	First_Code	Description	Standard	NOTE	NOTE
115	P56211100	SHAFT(HEAD AJ)		Fig3	
116	R32169600	HEAD SUB ASSY(8)		Fig16	Fig/Recommended Spare parts
117	R32169900	HEAD SUB ASSY(12)		Fig16	Fig/Recommended Spare parts
118	P56177002	HEAD FRAME		Fig3	
119	P52982000	HEAD PRESSURE KNOB		Fig3	
120	P56240700	SPRING(HEAD)		Fig3	
121	P56217800	HEAD PRESSURE ARM		Fig3	
122	P56212400	SHAFT(ARM)		Fig3	
123	P56212500	HEAD PRESSURE		Fig3	
124	P53626000	SPRING(HEAD AJ)		Fig3	
125	P52991000	AJ PLATE(HEAD)		Fig3	
126	P56212600	SHAFT(HEAD BASE)		Fig4	
127	K00533900	FINGER	97-438-02 1YAMA	Fig3	
128	R27444000	HEAD FRAME LH SET		Fig4	
129	P52989000	GEAR H(1_25*16)		Fig4	
130	P53627000	HEAD AJ SCREW		Fig3	
131	P53625000	HEAD LOCK SCREW		Fig5	
132	P41929000	COLLAR(5*6*4.8)		Fig5	
133	P56212702	HEAD HARNESS COVER		Fig4	
134	P52987000	SENSOR HOLD SP		Fig4	
135	MD4301022	PAN HEAD SCREW+SW+WL	2JP3010+SW+WL	Fig4	

## CL6NX SERVICE PARTS LIST

DATE: 24 Mar,2015

No	First_Code	Description	Standard	NOTE	NOTE
136	P52966000	HEAD FRAME RH		Fig5	
137	P52988000	AJ PLATE(RIBBON ROLLER)		Fig5	
138	P56212800	SHAFT(HEAD)		Fig4	
139	MD3401021	PAN HEAD SCREW+SW+WS	2JP4010+SW+WS	Fig4	
140	R32170100	RIBBON ROLLER S/A		Fig5	
141	P56412201	SHEET(RIBBON ROLLER)	178.5x24	Fig3	
142	P52984000	HEAD CLOSE LEVER		Fig5	
143	P56213001	AJ PLATE(RIBBON)		Fig5	
144	P56349001	HEAD CLOSE LEVER LH		Fig4	
145	P56213100	SPRING(HEAD UP)		Fig5	
146	NB0050022	SPRING WASHER	2sw5	Fig5	
147	MN1501030	HEX BOLT	H0JC5010	Fig5	
148	QC6524200	STICKER(CAUTION HOT)		Fig3	
149	Q04255000	STICKER(CAUTION)		Fig3	
150	K00041000	FERRITE CORE-LF	GRFC-8	Fig11	
152	R32170300	RIBBON REWIND S/A		Fig2	
153	P56213201	SHAFT(RIBBON CORE)		Fig1	
154	P56213302	RIBBON CORE-IN		Fig1	
155	R32170500	RIBBON CORE (A) S/A		Fig1	
156	P40495000	SHAFT(SLIDE)		Fig1	
157	P40494000	SPRING(SLIDE)		Fig1	

## CL6NX SERVICE PARTS LIST

DATE: 24 Mar,2015

No	First_Code	Description	Standard	NOTE	NOTE
158	R29805000	RELEASE BUTTON S/A		Fig1	
159	P53002000	RELEASE BUTTON COVER		Fig1	
160	P53001000	RELEASE BUTTON		Fig1	
161	P53644000	RIBBON RELEASE SPRING		Fig1	
162	PT1112080	BALL SUPPORTER	MF128ZZ	Fig2	
163	P11461000	ONEWAY CLUTCH	OWC814GXRZASY-618	Fig2	
164	P56354100	TORQUE LIMITTER	OTLC8-2500C	Fig2	Fig/Recommended Spare parts
165	P52962000	GEAR C(0_6*81)		Fig2	
166	P56344800	ONE-WAY LIMITTER	OWH8-0.1NLS	Fig2	
167	P32582000	BUSH	80F-0805	Fig2	
168	R32170800	RIBBON UNWIND S/A		Fig2	
169	P56213601	SHAFT(RIBBON BOSS)		Fig1	
170	ND0080030	E-SNAP RING	E-8SU	Fig1	
171	P53006000	RIBBON BOSS		Fig1	
172	P00626000	SPRING(RIBBON BOSS)		Fig1	
173	MH0300522	PAN HEAD P TIGHT SCREW	PTP3005NI	Fig1	
174	P53005000	DISK PLATE		Fig1	
175	MA0300621	PAN HEAD SCREW	2JP3006	Fig1	
176	NB0060022	SPRING WASHER	Sw6	Fig1	
177	P56226001	RIBBON BOSS CAP		Fig1	
178	P53642000	RIBBON BOSS SCREW		Fig1	

## CL6NX SERVICE PARTS LIST

DATE: 24 Mar,2015

No	First_Code	Description	Standard	NOTE	NOTE
179	P11280010	BF STOPPER		Fig2	
180	P56412101	BF SPRING		Fig2	
181	P12267000	TORQUE LIMITER	OTLC8-600B	Fig2	Fig/Recommended Spare parts
182	MA0200821	PAN HEAD SCREW	2JP2008	Fig2	
183	P56225402	RIBBON FRAME		Fig2	
184	P56217900	AJ PLATE(RIBBON SH)		Fig2	
185	R32285401	CONT FRAME(SILK)		Fig13	
186	P53118000	CONT FRAME SHEET		Fig13	
187	R29808000	CONT KEY UNDER(SILK)		Fig13	
188	R29019000	CONT KEY TOP(SILK)		Fig13	
189	P53112000	POWER KEY		Fig13	
190	R32393301	CL6NX KB PCB ASSY		Fig13	
194	Q04253000	ROUTE STICKER		Fig18	
195	Q04628500	Quick Guide		Fig20	
196	Q04537300	GWP-LEAFLET		Fig20	
197	Q04628600	Quick Guide(Chinese)		Fig20	
198	Q04281000	Safety Precautions		Fig20	
199	QB2042336	POLY BAG	0.04*228.6*355.6	Fig20	
200	H00878000	POWER CORD(EX1) -LF	VM0233-VM0089 3M	Fig20	
201	R32443601	PACKING SET (CL6NX)		Fig20	
202	Q04628701	CARTON CASE (PRINT)		Fig20	

## CL6NX SERVICE PARTS LIST

DATE: 24 Mar,2015

No	First_Code	Description	Standard	NOTE	NOTE
203	R32443700	CUSHION SET (CL6NX)		Fig20	
204	Q04629400	CARTON SPACER		Fig20	
205	Q02031000	POLY BAG (6 INCH)		Fig20	
206	R32197300	POWER SUPPLY CABLE SET-LF		Fig11	
207	R32114800	HEAD POWER CABLE SET-LF		Fig4,11	
208	R28428000	HEAD SIGNAL CABLE SET-LF		Fig4	
209	R28430000	KB CABLE SET-LF		Fig13	
210	R30254000	KB CABLE(NON-BT) SET-LF		Fig13	
211	R28426000	USB HOST CABLE SET-LF		Fig12	
212	R28425000	OPTION CABLE SET-LF		Fig12	
215	R30542000	I/F COVER ASSY		Fig17	Fig/Recommended Spare parts
216	R32163500	DAMPER ASSY		Fig7	
217	R32163800	ENGINE ASSY		Fig6	
218	R32171100	CONTROL PANEL ASSY		Fig13	
219	R32393201	CL6NX KB PCB SUB ASSY		Fig13	Fig/Recommended Spare parts
220	P53646000	MO PULLEY		Fig14	